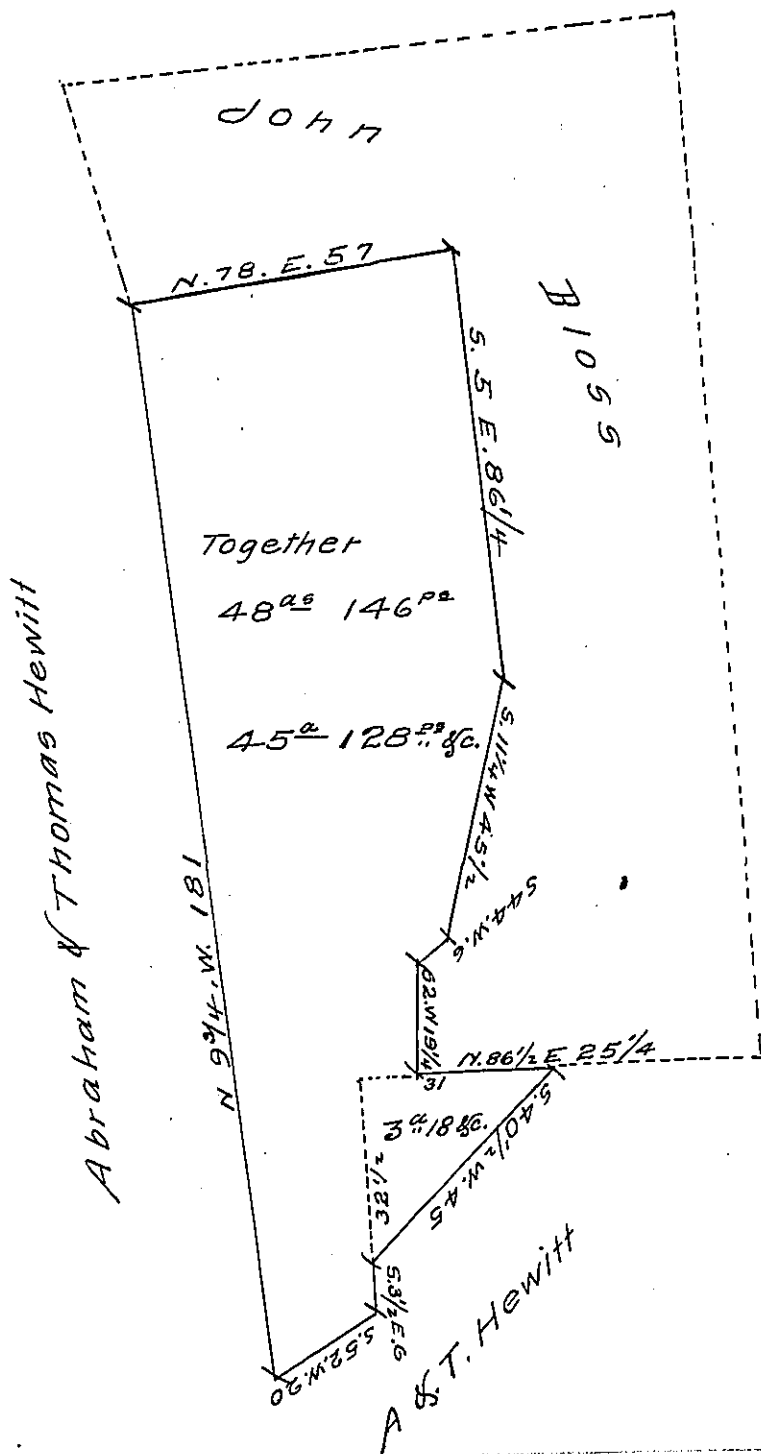


FORM No. 1.



Draft of a Tract of land situate in Washington (late Heidelberg) township
 Lehigh County containing 48^{ac} 146^{ps} and allowance of six per Cent for
 roads &c. 45^{ac} 128^{ps} thereof being part of 104^{ac} &c. originally surveyed
 by Application N 625 Entered Aug 25th A.D. 1765 to John Feller and
 3^{ac} 18^{ps} and allowance being originally surveyed to John Flex by warrant
 dated Jan 8th 1817. The above now returned for Abraham & Thomas Hewitt
 Geo. Blank C.S.

To R. B. Beath Esq
 Surjor General.

IN TESTIMONY that the above is a copy of the original remaining on file in
 the Department of Internal Affairs of Pennsylvania, made
 conformably to an Act of Assembly approved the 16th day of
 February 1833, I have hereunto set my hand and caused
 the Seal of said Department to be affixed at Harrisburg,
 this twenty-third day of December 1907

Henry Houder
 Secretary of Internal Affairs.